

MFH PROGRAM NATIONWIDE

Statistics as of May 30

	2013	2016	Difference
Projects	15,033	14,421	- 612
Direct 515	14,356	13,819	- 537
Farm Labor Housing	677	602	- 75
Number of Units	441,742	433,901	- 7,841
Direct 515	425,010	417,087	- 7,923
Farm Labor Housing	16,732	16,814	+ 82
Number of RA Units	284,961	282,911	- 2,050
Direct 515	273,953 / 64%	271,403 / 65%	- 2,550 / +1%
Farm Labor Housing	11,008 / 66%	11,508 / 68%	+ 500 / +2%

MFH PROGRAM IN WISCONSIN

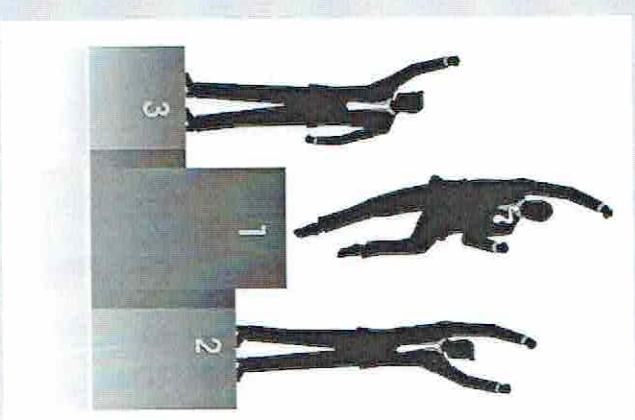
Statistics as of May 30

	2013	2016	Difference
Projects	450	394	- 56
Direct 515	440	385	- 55
Farm Labor Housing	10	9	- 1
Number of Units	9,744	8,922	- 822
Direct 515	9,676	8,854	- 822
Farm Labor Housing	68	68	0
Number of RA Units	6,556	5,979	- 577
Direct 515	6,497 / 67%	5,920 / 67%	- 577
Farm Labor Housing	59 / 87%	59 / 87%	0

HOW WISCONSIN RANKS NATIONWIDE

Statistics as of May 30, 2016

- Number of Properties – 17th in the Nation
- Number of Units – 23rd in the Nation
- Number of Rental Assistance Units – 23rd in the Nation
- Delinquency – 2.3% - 26th in the Nation
- Vacancy Rate – 8.85% - 7th in the Nation
- Class A Properties – 29.2% of our properties – 41st in Nation
- Class C Properties – 60.4% of our properties – 12th in Nation
- Properties with Physical Findings – 7th highest in Nation



GUARANTEED RURAL RENTAL HOUSING 538 PROGRAM

STATISTICS

- Nationwide
 - 781 Loans in the Nation
 - 39,800 units
 - 464 New Construction
 - 345 Rehab/Repair
- Wisconsin
 - 4 Loans
 - 119 Units
 - 3 New Construction / 1 rehab

